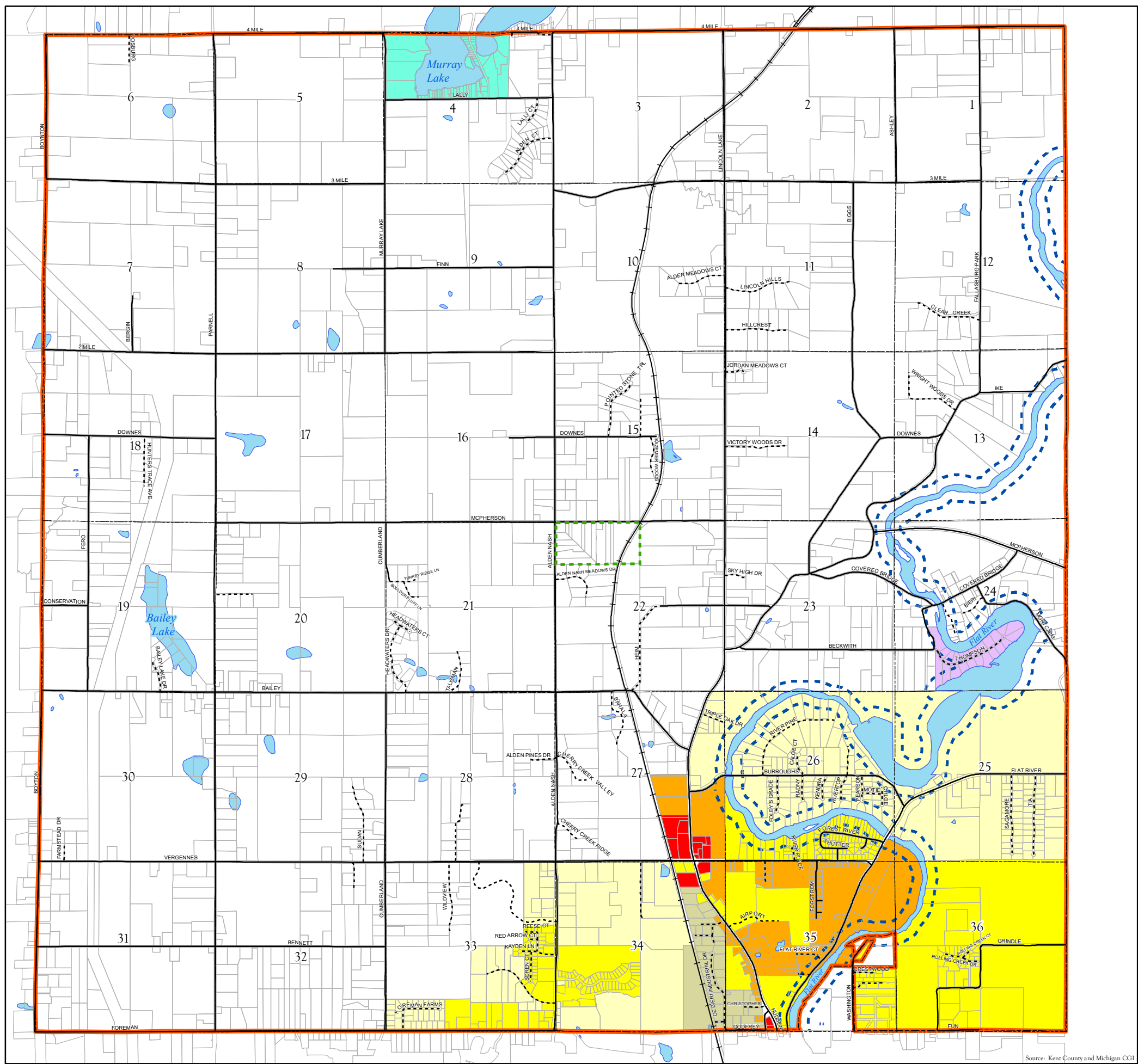


Vergennes Township

Kent County, Michigan

Zoning Map

Last amended: June 17, 2019



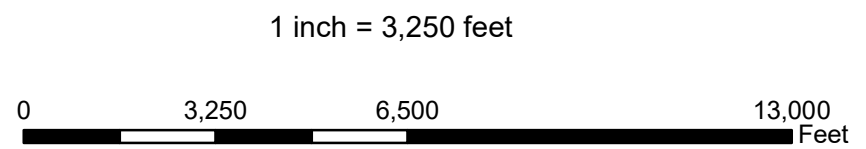
Legend

Roads

- Private Roads (dotted line)
- Public Roads (solid line)
- Township Boundary (orange outline)
- Parcels (thin grey lines)
- Open Water (blue area)
- FR Flat River (300' from high water mark) (dashed blue line)

Zoning

- Rural Agricultural (white circle)
- R1 - Low Density Residential (light yellow circle)
- R2 - Medium Density Residential (yellow circle)
- LR - Lake Residential (light blue circle)
- R3 - Special Residential (orange circle)
- C - Commercial (red circle)
- I - Industrial (grey circle)
- Court Ordered Zoning (purple circle)
- Little Farms Plat Overlay District (green dashed circle)



williams&works
engineers | surveyors | planners

Source: Kent County and Michigan CGI